



SPECIFICATION 2.4.90 & 5.90

- 1 ALL FOUNDATION & LEVELLING COURSE FLOOR TO BE IN FCC 1:2:4 MIX
- 2 SUPERSTRUCTURE BRICK WORK TO BE IN CM 1:3 MIX USING STICK BRICKS
- 3 ALL PCC WORK TO BE IN 1:2:4 MIX USING 20MM HARD BROKEN STONE
- 4 PLASTERING WALLS TO BE IN CM 1:4 MIX & CEILING PLASTER IN CM 1:3 MIX
- 5 FLOOR FINISH WITH Mosaic Tiles over 1/2" PCC 1:2:5 MIX & CEMENT PLASTER IN CM 1:4 MIX.
- 6 WEATHERING COURSE WITH 5:1:1:2:5 & FLAT TILES LAY IN CM 1:3 MIX
- 7 THREE COATS OF COLOR WASHING FOR INNER AND OUTER WALLS.
- 8 TEAK WOOD DOORS & WINDOWS WITH TWO COATS OF ENAMEL PAINT OVER ONE COAT OF PRIMER

Planning Permit No. A/1032/90

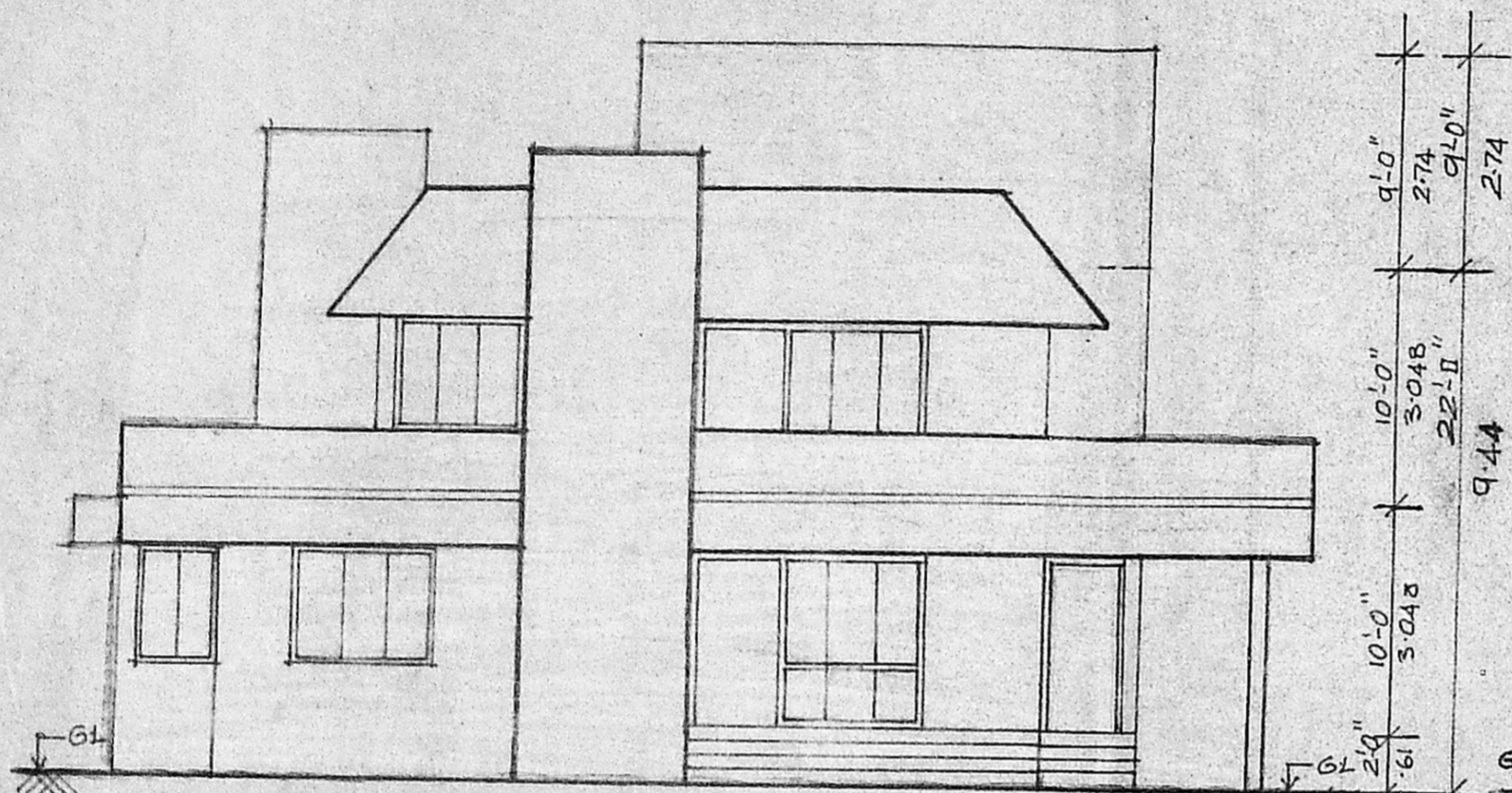
**APPROVED**

SUBJECT TO THE CONDITIONS IN THIS OFFICE LETTER.

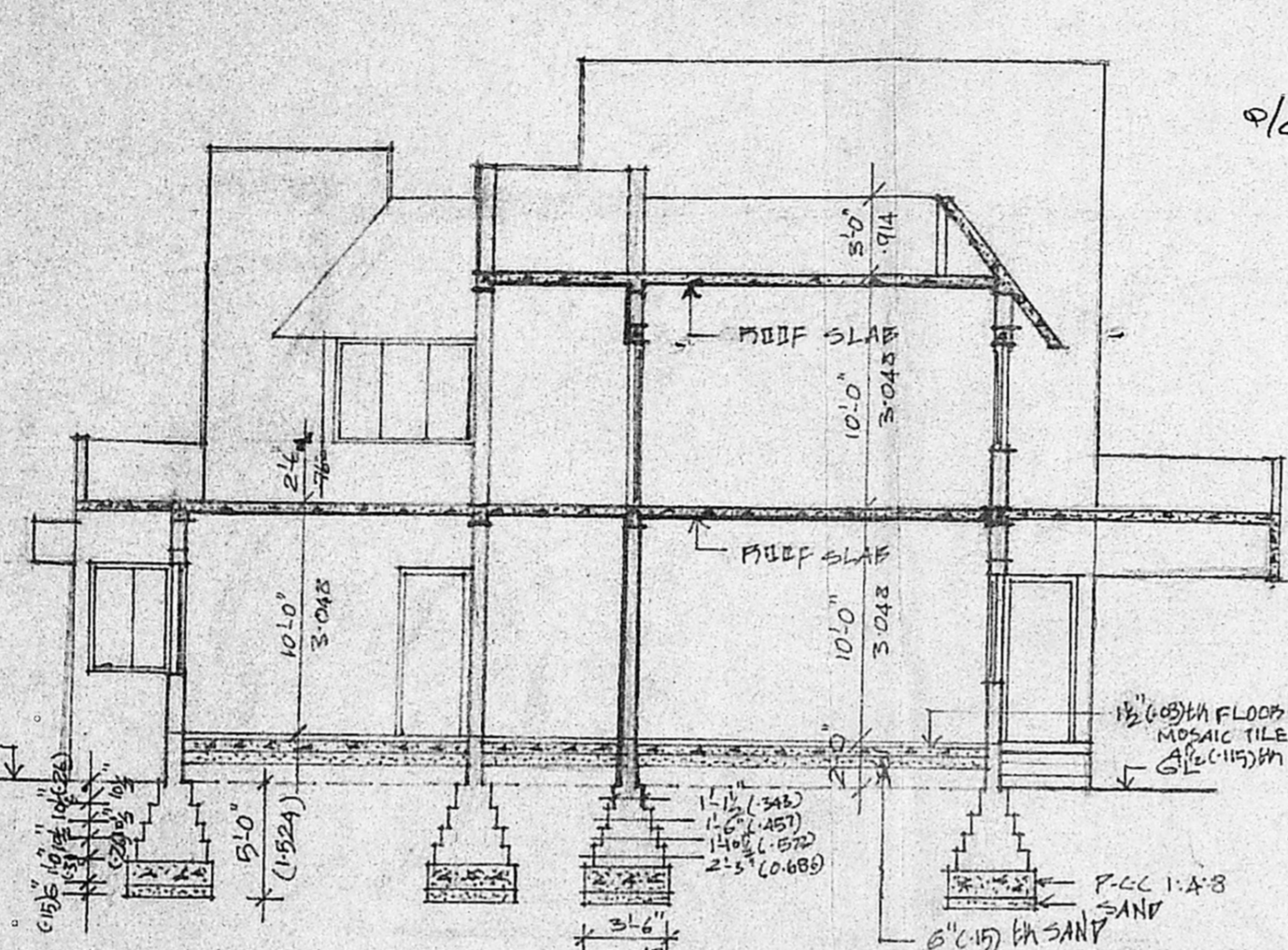
No. 2/7071/90 Date 16.08.90

J. Jayaram

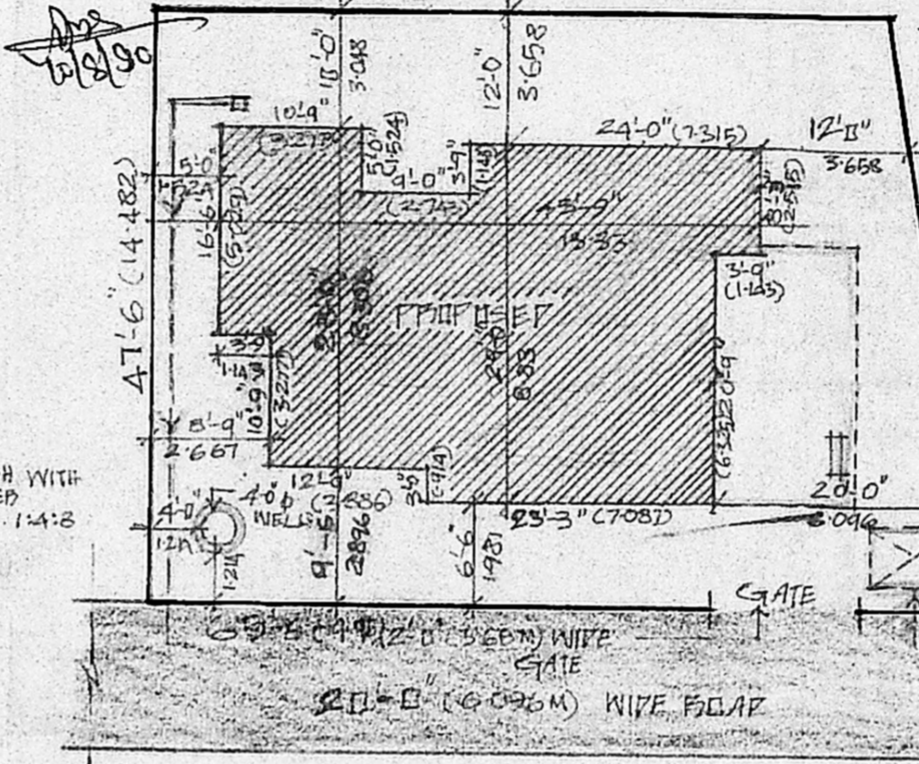
FOR MEMBER SECRETARY  
MADRAS METROPOLITAN  
DEVELOPMENT AUTHORITY  
MADRAS - 600 008



FRONT ELEVATION



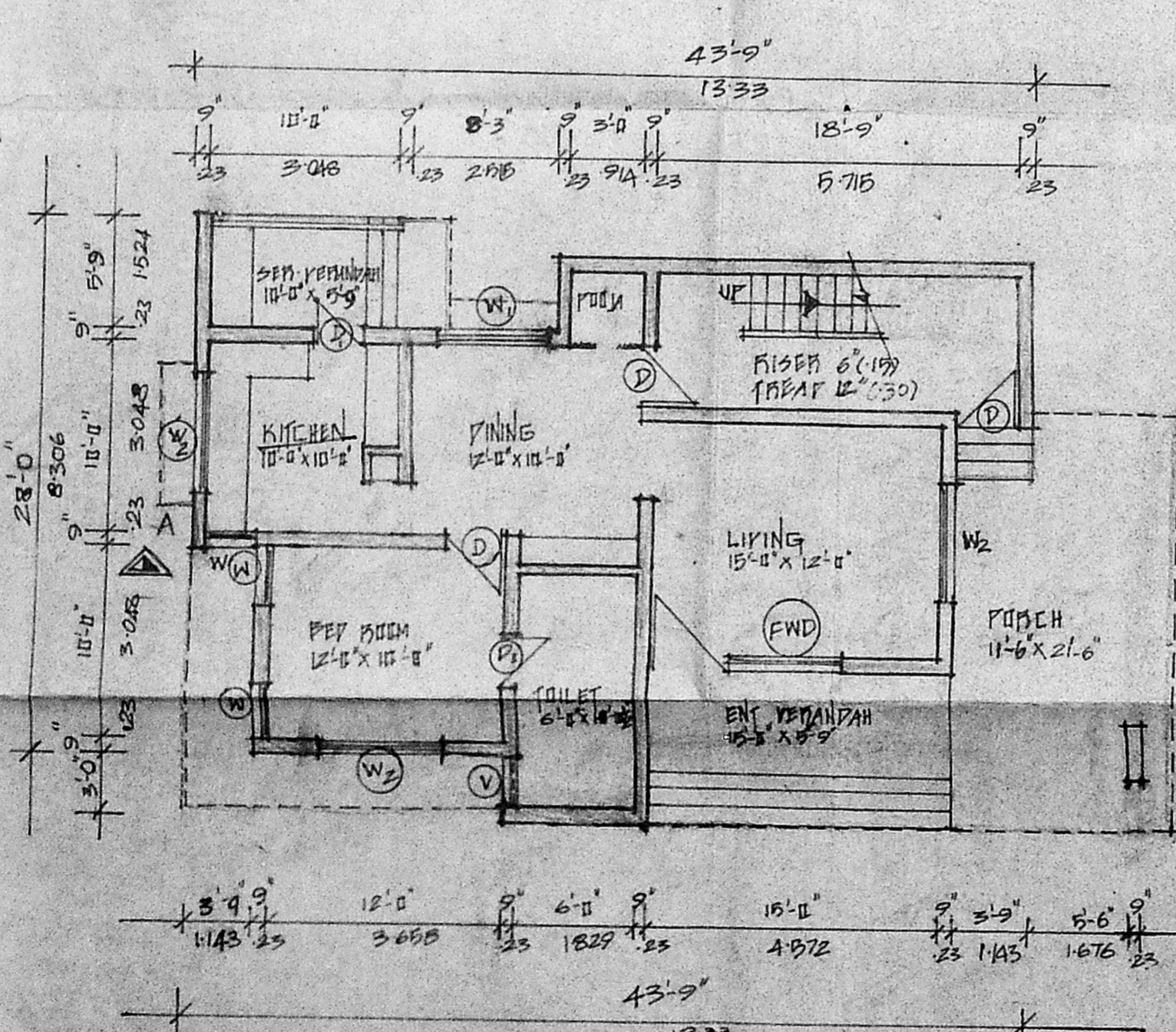
SECTION AB



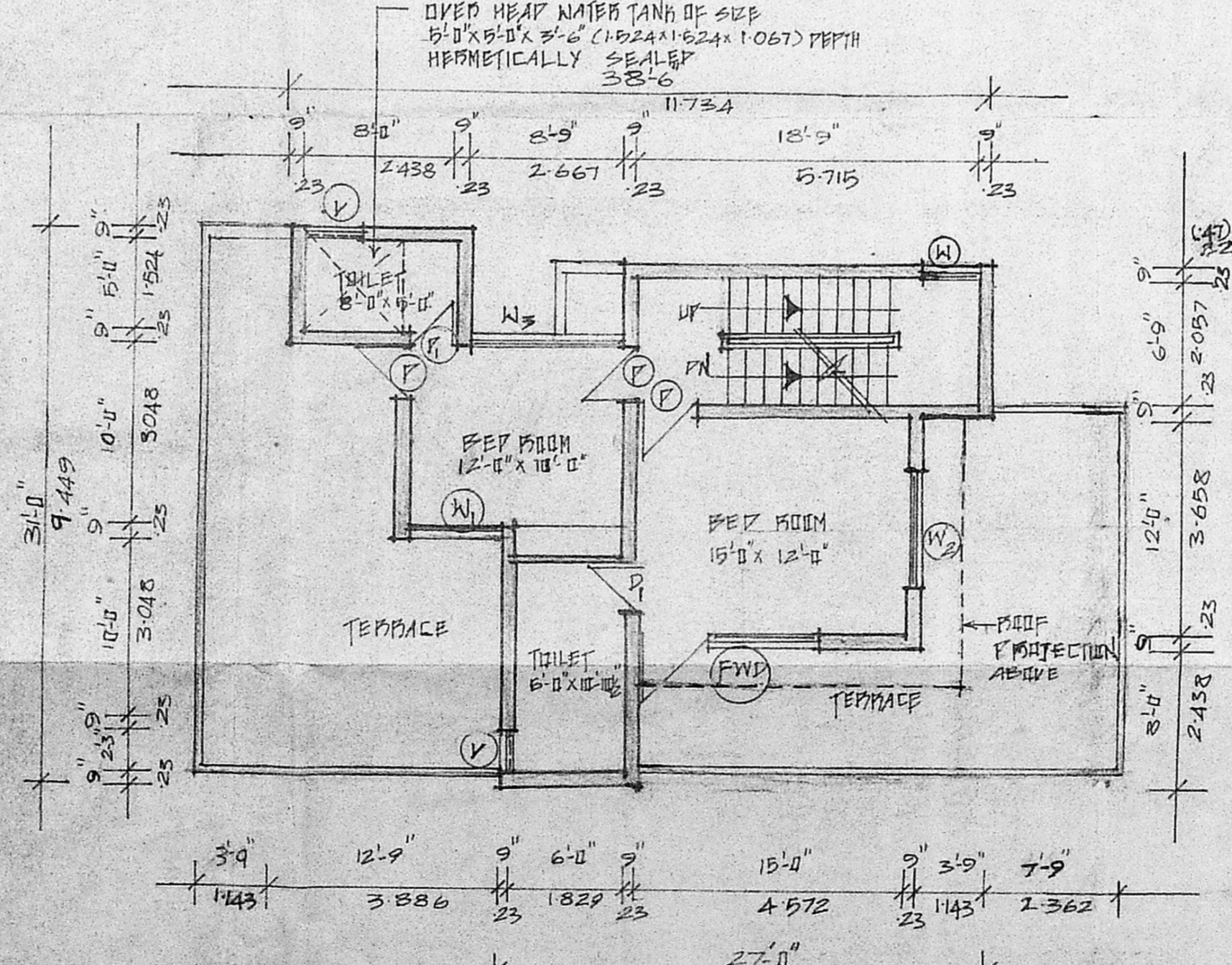
SITE PLAN  
SCALE 1"=16'-0"

NO	AREA	PERIMETER	AREA	PERIMETER
1	476'	476'	476'	476'
2	476'	476'	476'	476'
3	476'	476'	476'	476'
4	476'	476'	476'	476'
5	476'	476'	476'	476'
6	476'	476'	476'	476'
7	476'	476'	476'	476'
8	476'	476'	476'	476'
9	476'	476'	476'	476'
10	476'	476'	476'	476'
11	476'	476'	476'	476'
12	476'	476'	476'	476'
13	476'	476'	476'	476'
14	476'	476'	476'	476'
15	476'	476'	476'	476'
16	476'	476'	476'	476'
17	476'	476'	476'	476'
18	476'	476'	476'	476'
19	476'	476'	476'	476'
20	476'	476'	476'	476'
21	476'	476'	476'	476'
22	476'	476'	476'	476'
23	476'	476'	476'	476'
24	476'	476'	476'	476'
25	476'	476'	476'	476'
26	476'	476'	476'	476'
27	476'	476'	476'	476'
28	476'	476'	476'	476'
29	476'	476'	476'	476'
30	476'	476'	476'	476'
31	476'	476'	476'	476'
32	476'	476'	476'	476'
33	476'	476'	476'	476'
34	476'	476'	476'	476'
35	476'	476'	476'	476'
36	476'	476'	476'	476'
37	476'	476'	476'	476'
38	476'	476'	476'	476'
39	476'	476'	476'	476'
40	476'	476'	476'	476'
41	476'	476'	476'	476'
42	476'	476'	476'	476'
43	476'	476'	476'	476'
44	476'	476'	476'	476'
45	476'	476'	476'	476'
46	476'	476'	476'	476'
47	476'	476'	476'	476'
48	476'	476'	476'	476'
49	476'	476'	476'	476'
50	476'	476'	476'	476'
51	476'	476'	476'	476'
52	476'	476'	476'	476'
53	476'	476'	476'	476'
54	476'	476'	476'	476'
55	476'	476'	476'	476'
56	476'	476'	476'	476'
57	476'	476'	476'	476'
58	476'	476'	476'	476'
59	476'	476'	476'	476'
60	476'	476'	476'	476'
61	476'	476'	476'	476'
62	476'	476'	476'	476'
63	476'	476'	476'	476'
64	476'	476'	476'	476'
65	476'	476'	476'	476'
66	476'	476'	476'	476'
67	476'	476'	476'	476'
68	476'	476'	476'	476'
69	476'	476'	476'	476'
70	476'	476'	476'	476'
71	476'	476'	476'	476'
72	476'	476'	476'	476'
73	476'	476'	476'	476'
74	476'	476'	476'	476'
75	476'	476'	476'	476'
76	476'	476'	476'	476'
77	476'	476'	476'	476'
78	476'	476'	476'	476'
79	476'	476'	476'	476'
80	476'	476'	476'	476'
81	476'	476'	476'	476'
82	476'	476'	476'	476'
83	476'	476'	476'	476'
84	476'	476'	476'	476'
85	476'	476'	476'	476'
86	476'	476'	476'	476'
87	476'	476'	476'	476'
88	476'	476'	476'	476'
89	476'	476'	476'	476'
90	476'	476'	476'	476'
91	476'	476'	476'	476'
92	476'	476'	476'	476'
93	476'	476'	476'	476'
94	476'	476'	476'	476'
95	476'	476'	476'	476'
96	476'	476'	476'	476'
97	476'	476'	476'	476'
98	476'	476'	476'	476'
99	476'	476'	476'	476'
100	476'	476'	476'	476'

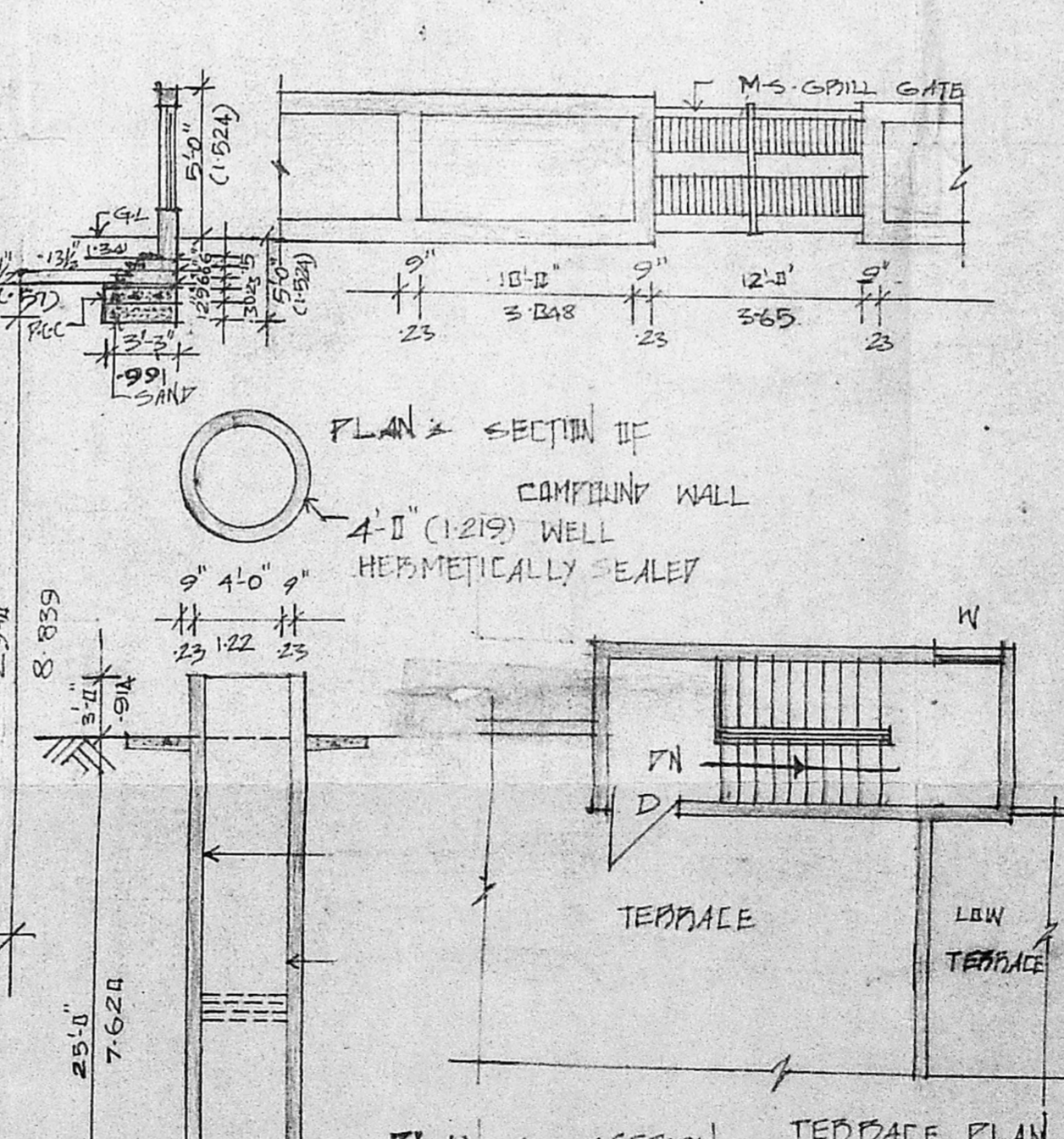
KEY PLAN  
NOT TO SCALE



GROUND FLOOR PLAN



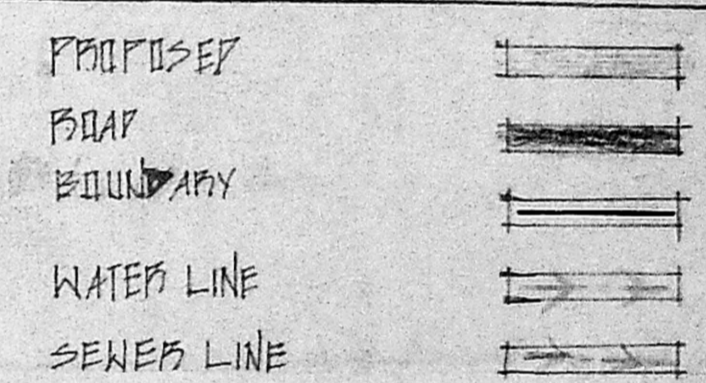
FIRST FLOOR PLAN



PLAN & SECTION OF COMPOUND WALL  
TERRACE PART-PLAN

SCHEDULE OF JOINERY

NO	DESCRIPTION	SIZE	QTY	UNIT
1	FRONT FRENCH	10'-0" x 7'-0"	3	SQUARE
2	WINDOW CUM DOOR	3'-0" x 7'-0"	7	SQUARE
3	DOOR	2'-6" x 7'-0"	7	SQUARE
4	WINDOW	3'-0" x 4'-6"	9	SQUARE
5	WINDOW	5'-3" x 4'-6"	1	SQUARE
6	WINDOW	6'-0" x 4'-6"	1	SQUARE
7	WINDOW	3'-9" x 4'-6"	2	SQUARE
8	VENTILATOR	2'-3" x 2'-0"	6	SQUARE



SCALE: 1"=8'-0"

AREA BOUNDARY FIRST FLOOR AREA: 1582.75 sq ft 147.02 sq m

GROUND FLOOR PLINTH AREA: 901.59 sq ft 83.74 sq m

SERVICE & ENT. VERANDAH: 192.125 sq ft 17.85 sq m

FIRST FLOOR AREA: 681.125 sq ft 63.33 sq m

PORCH AREA: 247.25 sq ft 22.93 sq m

PLINTH AREA: 2957.59 sq ft 274.81 sq m

PROPOSED RESIDENCE FOR  
M/S A P SANTOSH IN PLOT NO 162 SURVEY NO 98  
AS PER PATA NO. 116 SQUARE IN NO. 148  
OBBAM THIRAPAKHAM VILLAGE, SAIVAPET  
TALUK, CHINGLEPUT DISTRICT

OWNER  
*[Signature]*

LICENSED SURVEYOR  
*[Signature]*

REGISTERED ARCHITECT,  
Class I License No. R.A. 173,  
Co. of Architects, Madras

ARCHITECT  
K. JOSEPH  
No. 4, 9th Lane, Shastri Nagar,  
MADRAS - 20